



TECHNICAL DESCRIPTION OF TYPE C

GENERAL

Foundation:	Foundation is at 80 cm., incl. Mediator fundament and insulated floor.
Outside front: Window frames:	Hollow concrete elements with plaster and partial wood. Tropical hardwood 'Teinte Acajou Clair de Borned' with double glazing
Roofing:	TBF 'Tuile Romane Vieffle France' tiles on insulated roof
Ventilation:	Mechanical ventilation system type Neptune IL
Water heater:	Electisch 'Chaffoteaux' 2001 Vert Groupe Sécurité.
Heating:	Electric radiators Type Sauter Classe II Blanc', with thermostat.

TERRACES

Electricity: Concrete tiles total ca. 36 m2.

Next to the entrance.

HALL/ENTRANCE

Flooring:	Partial insulated floor with tiles 'Cronos Grès fine Porcellanato' 30x30 cm.
Walls and ceilings :	Painted White
Electricity:	1 switch entrance and 1 outside light.
Stairs:	Hard wood..

LIVING ROOM

Flooring:	Partial insulated floor with tiles 'Cronos Grès fine Porcellanato' 30x30 cm.
Walls and ceilings :	Painted White
Window frames:	Tropical hardwood 'Teinte Acajou Clair de Borned' with double glazing
Electricity:	1 switch, 1 light fixture, 5 double plugs
Heating:	Electrical radiators Type Sauter Classe II Blanc', with thermostat.
TV/Telephone:	Connection for TV and 2 x telephone.
Open fire place	

TOILET 1

Flooring:	Partial insulated floor with tiles 'Cronos Grès fine Porcellanato' 30 x 30 cm.
Walls and ceilings :	Painted White.
Electricity:	1 switch and 1 light plug.
Plumbing fixtures:	1 Toilet 'Aflia Basta 3460' en 1 fountain 'Allia Prima'.

OPEN KITCHEN

Flooring:	Partial insulated floor with tiles 'Cronos Grès fine Porcellanato' 30x30 cm.
Walls and ceilings :	Painted White.
Electricity:	1 switch and 1 light fixture, 5 single connection plugs.
Kitchen:	Melamine with stainless steel washing Ceramic tap, tiles 20x20 (60 cm. high), Refrigerator incl. freezer 140 liter, ceramic cooking-range with 4 burners and exhauster. microwave/grill and dishwasher.



BARN

Flooring: Concrete.
Electricity: 1 switch and 1 light plug.
1 connection for washing machine.

First Floor

BEDROOM 1

Flooring: Concrete floor with tiles 'Cronos Grès fine Porcellanato' 30x30 cm.
Walls and ceilings : Painted White.
Electricity: 2 switches and 1 light point, 2 single connection plugs.
Heating: Electrical radiators Type Sauter Classe II Blanc', with thermostat.
TV/Telephone: 1/1 connection.

BEDROOM 2

Flooring: Concrete floor with tiles 'Cronos Grès fine Porcellanato' 30x30 cm.
Walls and ceilings : Painted White.
Electricity: 2 switches and 1 light fixture, 2 single connection plugs.
Heating: Electrical radiators Type Sauter Classe II Blanc', with thermostat.

BEDROOM 3

Flooring: Concrete floor with tiles 'Cronos Grès fine Porcellanato' 30x30 cm.
Walls and ceilings : Painted White.
Electricity: 2 switches and 1 light fixture, 2 single connection plugs.
Heating: Electrical radiators Type Sauter Classe II Blanc', with thermostat.

BATHROOM 1

Flooring: Concrete floor with tiles 'Cisa Lazid' 20x20 cm.
Walls: Tiles 'Faience' 20x25 cm. Height 180 cm.
Ceiling: Painted White.
Electricity: 1 switch and 1 light fixture, 1 connection plug for shaving.
Plumbing fixtures: Bath (170x70) 'Roca'. Porcelain sink 'Alia Prima', (Postform blanc 120x60), mirror and light. Ceramic tap model 'Roca Monodid'.
Heating: Electrical radiators Type Sauter Classe Blanc', with thermostat.

BATHROOM 2

Flooring: Concrete floor with tiles 'Cisa Lazid' 20x20 cm.
Walls: Tiles 'Faience' 20x25 cm. Height 180 cm.
Ceiling: Painted White.
Electricity: 1 switch and 1 light fixture, 1 connection plug for shaving.
Plumbing fixtures: Shower door 'security' glass, 80x80 cm.
Porcelain sink 'Alia Prima', (Postform blanc 120x60), mirror and light. Ceramic tap model 'Roca Monodid'.
Heating: Electrical radiators Type Sauter Classe Blanc', with thermostat.



TOILET 2

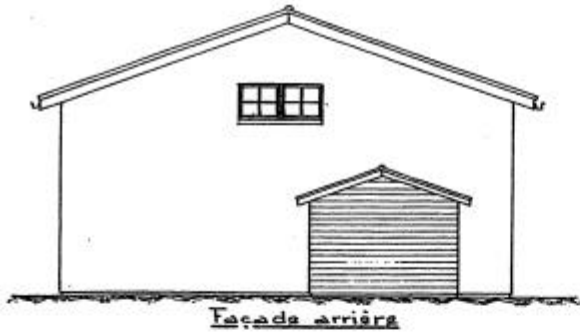
Flooring: Concrete floor with standard white tiles 15x15 cm.
Walls and ceilings : Painted White.
Electricity: 1 switch and 1 light fixture.
Plumbing fixtures: 1 Toilet 'AWa Basta 3460'.

BALCONIES

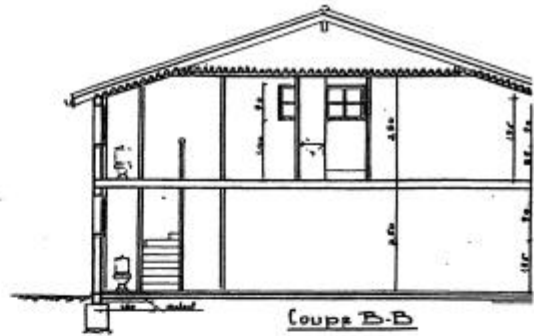
Flooring: Concrete floor
Fence: Wooden fence type "Les Landes". Each bedroom has excess to a balcony.

CORRIDOR

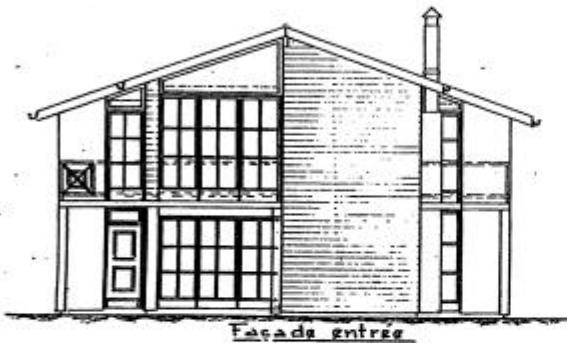
Flooring: Concrete floor with tiles 'Cronos Grès fine Porcellanato' 30x30 cm.
Walls and ceilings : Painted White.
Electricity: 2 switches and 1 light fixture.



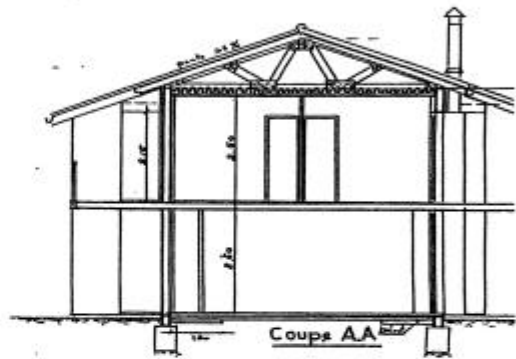
Facade arriere



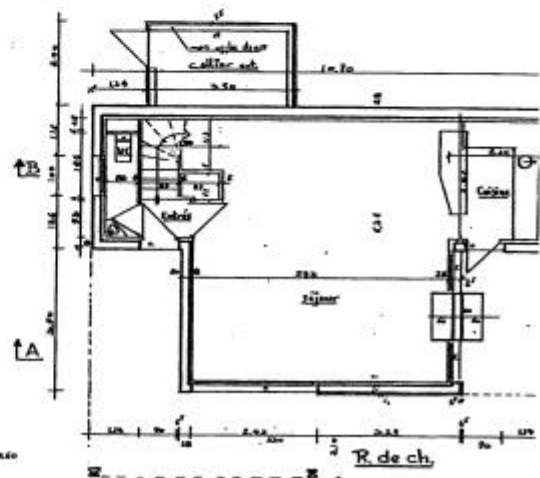
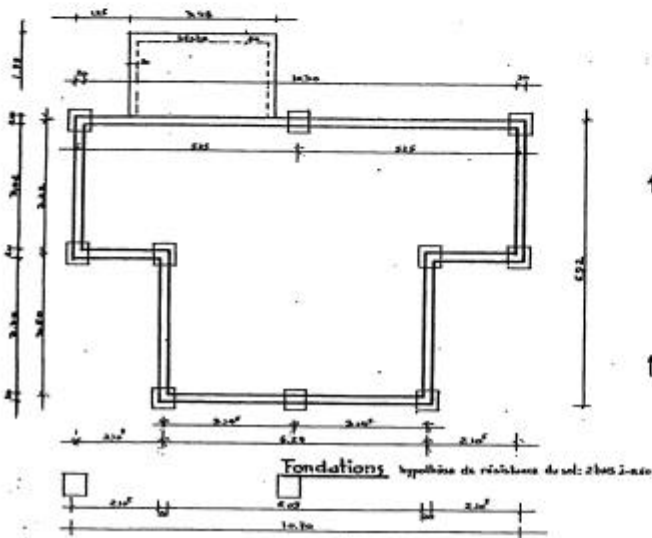
Coupe B-B

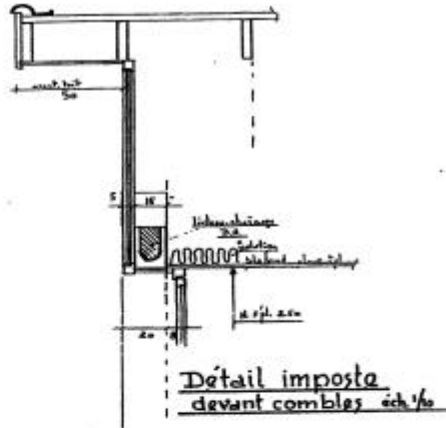
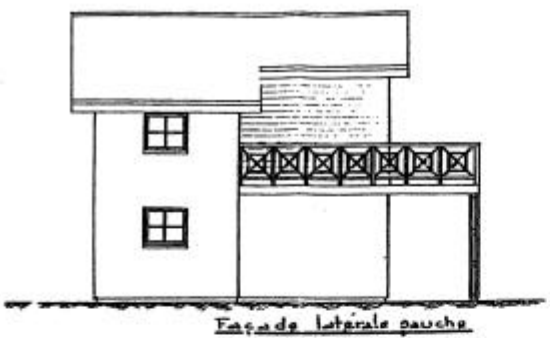


Facade entree

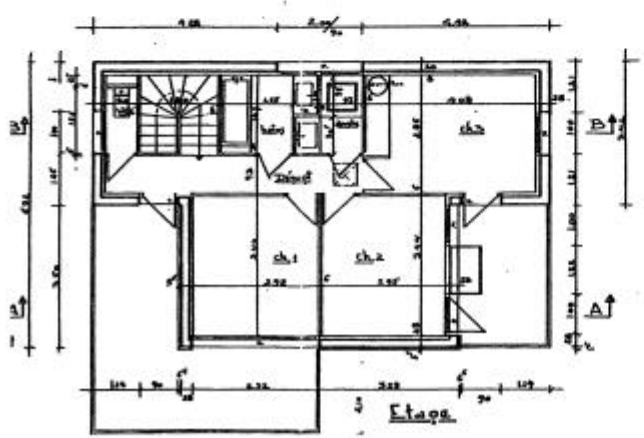


Coupe AA






A... 1/10; Rectifications: balcons, portes
 et tout en angle de 45°
 B... 1/4; Déplacement des lignes courbes sans
 des parties et arrondies et balcons
 C... 1/4; Déplacement des lignes courbes sans



E.T.CO.H.
 10, rue de la Liberté
 13000 MARSEILLE - Tél. 04 91 26 26 00
 Cour. 04 91 26 26 00
 Fax 04 91 26 26 00

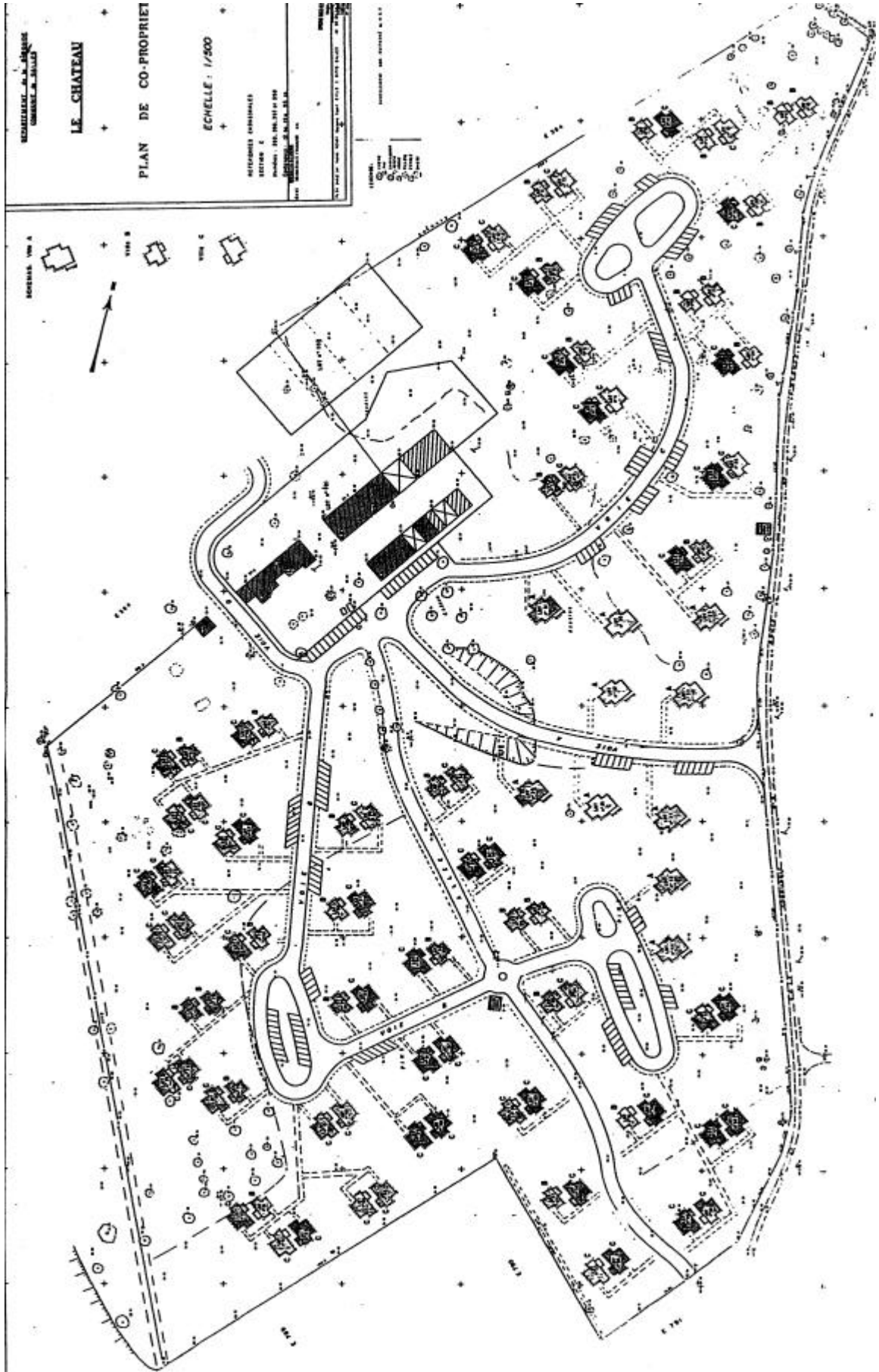
Résidence
du château
de Salles
VILLAS type C
 n: 4

Maitre d'ouvrage: S.C.I. Château de Salles

Entreprise générale:  E-T-CO-H

RESIDENCE DU

CHATEAU DE SALLES
★★★★



REDACTED

LE CHATEAU

PLAN DE CO-PROPRIET

ECHELLE : 1/200

REDACTED

REDACTED